

## MagicPin

### Marking Heads

Our MagicPin 100T needlemarker, rotary fixture and UMC 112 controller is a powerful, flexible needlemarking system with the most affordable price point in the industry. With the UMC 112 and rotary fixture you have the ability to mark around the radius or outside diameter of your parts. The UMC 112 controller also features advanced I/O capabilities and an IP54 industrial rated enclosure. A T-Slot bed plate and manual height adjustment allow for easy setup.



Rotary Fixture



UMC 112



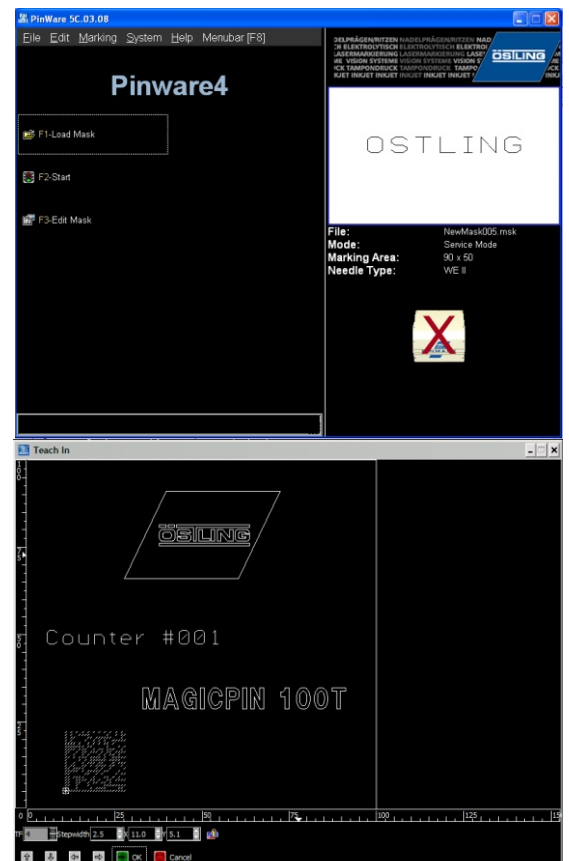
### Features

- Programmable needle speed control
- 4" X 4" marking window
- Marks text, serial/date codes, graphics, and 2D codes
- Manual height adjustment/T-slot work surface
- Foot switch start included
- Powerful software control
- Keyboard/Mouse connectivity for control of unit
- Ethernet/RS232 connectivity for I/O and networking
- Advanced I/O capability
- USB connectivity for file backup/offsite storage
- Color display

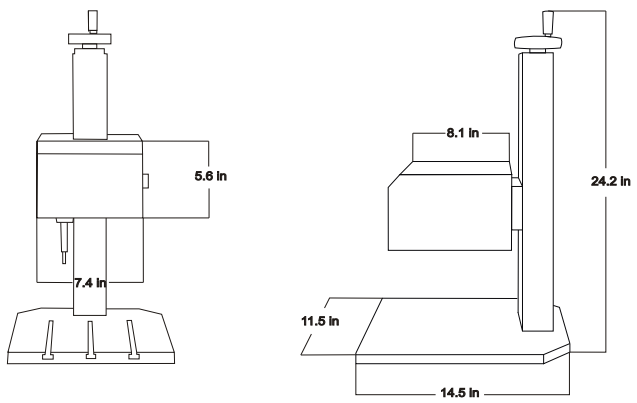
### Software

With our Pinware software, you can easily create and mark text, serial/date codes, graphics and 2D barcodes. With an intuitive menu-driven interface, a "what you see is what you get" display, and "teach-in" alignment feature you can create new part marking programs in seconds. Take our software for a test drive; visit the downloads section at our website [www.permanentmarking.com](http://www.permanentmarking.com) today to see how easy it is!

With the Pinware software creating a new marking file is simple. Just type in the text, define placement and orientation, press the preview button to confirm the mark, and press start!



# MagicPin Specifications



### TECHNICAL DATA

Head Dimensions	7.4" x 8.1" x 5.6"
Marking Area	4.0" x 4.0"
Weight	9.9 lbs
Control Unit	UMCbox
Max. Marked Part Height	11.8 in. (with WE2 needle)
Resolution	0.0025 in. per motor step
Available Needles	WE2 and WP2
Marking Speed	5 characters per second
Compressed Air	6 bar (6 mm connector) via control unit
Power Supply	(110 - 230 V AC, 50/60 Hz)

# UMC 112 Specifications



### TECHNICAL DATA

CPU	400 MHz, 128 MB RAM, USB, Ethernet, SVGA
Housing	19" IP54 industrial housing
Memory	Compact Flash 256 MB, optional HD
Motor Drive	2 axis motor control (up to 4 axes optional)
Outputs	8 digital, electrically isolated, 24V, up to 32 optional
Inputs	8 digital, electrically isolated, up to 32 optional
Display	SVGA 65K color display at 800 x 660 resolution
Interface	USB: keyboard, memory stick, mouse Ethernet: SMB, communication protocol RS232/RS485: communication protocol, 24V I/O: start, e-stop, fileselect / profibus DP
Dimensions	17.4 x 15.4 x 7.2 in.

### SOFTWARE

File Management	Built-in local storage and networking abilities
Data Transfer	USB and 10/100 ethernet
Control Interface	RS-232 serial interface
Input Fields	31 fields with up to 50 characters each
Font	Standard DIN 1451 compliant, other optional
Character Height	Customizable from 0.5 to 99mm
Character Spacing	Customizable from 0 to 10 mm
Character Width	Customizable factor from 0.1 to 10
Positioning	X Y Coordinates or Teach In
Character Direction	Horizontal, vertical, any angle, any arc
Additional Function	Serial/Date/Shift codes, bar code scanning
Graphics	Easy import of logos and symbols via HPGL .plt
Process Control	Graphic display of active function; status signals

# Needles

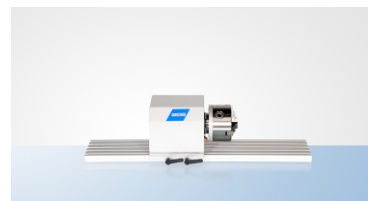


<b>Standard Needle</b>	
Frequency	200 Hz
Air Pressure	4-6 bar
Piston Diameter	14 mm
Maximum Stroke	4 mm
Needle Diameter	3 mm



<b>Standard Needle</b>	
Frequency	50-200 Hz
Air Pressure	3-6 bar
Piston Diameter	10 mm
Maximum Stroke	10 mm
Needle Diameter	3 mm

# Rotary Fixture



### Specifications

- Software control via UMC 112
- 0.1 millimeter resolution
- Chuck holding diameters - 3 mm to 80 mm

