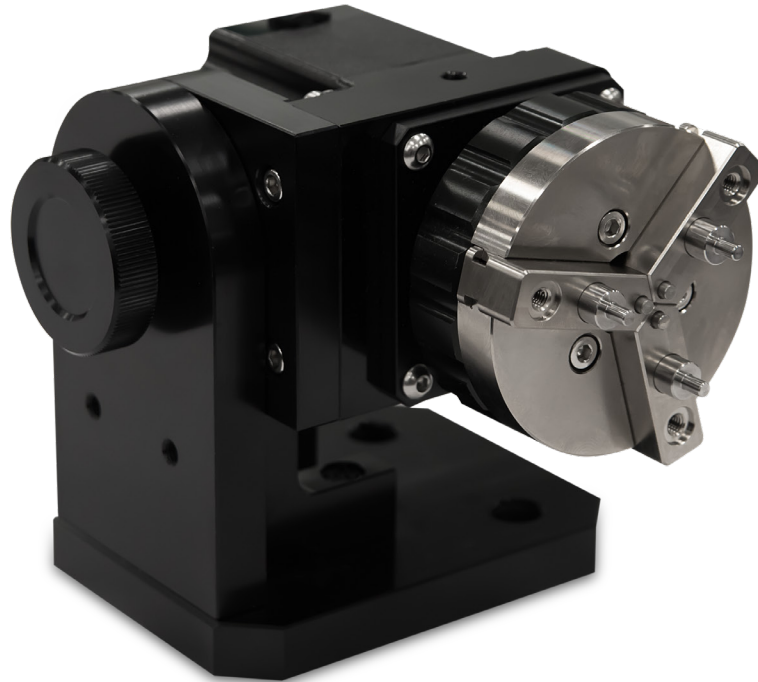


MR65 Rotary

for Radial Laser Marking



The MR65 is a robust, compact rotary axis ideal for 360° radial laser marking. MR65 can be used with any of our LaserGear systems. The unit features a manual three jaw holding chuck along with multi-diameter fingers for holding the ID or OD of components. A tilting feature enables marking on complex angles or inner diameters. When sold independent of a workstation, the MR65 is supplied with a driver and power supply expansion box.

Specifications

| Chuck Type | Min. Diameter | Max Diameter | Max Weight | Resolution on 1" OD | Steps/Degree | Tilt Angle |
|---|---------------|--------------|------------|---------------------|--------------|------------|
| 2.5" 3 Jaw Chuck with Manual Adjustment | .004" / 1mm | 3.74" / 95mm | 2lb / 1kg | .04mm | 5.55 | 0-90° |



North America, Headquarters

370 Gateway Drive
Chillicothe, OH 45601 • U.S.A.
Phone +1 (740) 779-9918
info@lasergear.com
www.lasergear.com